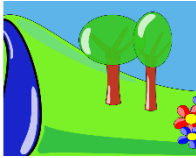
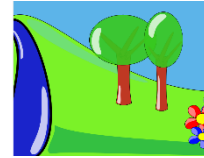


WATER WISE PLANNING





Water wise Planning



The scenario: You are working for the Australian Government in urban planning. You have been given the task of research and development. Due to Australia's recent population growth a new town needs to be developed. There are many aspects that need to be considered to find suitable land for the township.



Your task:

Part 1: Research communities that exist with abundant water resources, compared to those with limited water supply.

1. Research a place where settlement has occurred due to abundant water resources in Australia. (Possibly a town along the River Murray or where large rainfall occurs).
2. Compare this to a settlement with limited water in Africa. How does this affect travel, social and living conditions?
3. What are some ways of overcoming water scarcity? (Desalination plant, purifying tablets, solar power, aquifers, limiting water wastage etc). Choose two of these to research; how do they work? Can they work in all countries and/ or communities?

Part 2: Create your own Township!



Where will you build your new town? What will you name it?

- Document your new township on a map of Australia and persuade the government on why it is the best location.
- Create a sketch of your town, either by hand or on computer, showing the layout of houses and community facilities.



Answer the following questions about your township:

1. Where will your community source its water from? (River, rain water, ocean, piped in from other locations etc).

2. What infrastructure will you need to build to allow for the water supply? (Install pipes, desalination plant, rain water tanks etc)
3. What is the influence of the nearby environment quality? (water – Rivers, Lakes, Run off, air pollution – factories nearby, cars etc)
4. Social connections. How will the members of your community make connections with others? (towns nearby, recreational facilities, essential services – hospitals, ambulance)
5. Community identity:



- Cost of living. How will people get to your township? (transport options – are they existing roads or will you need to build new ones, facilities – will you build shopping centres or will travel to nearby towns, housing – will there be apartments and homes?)

6. How will your new town cope with a water related disaster? (Flood, tsunami, drought, landslide high tides). Choose one that could possibly occur in your town and develop an action/ survival plan for the community.

Presentation: Create a PowerPoint presentation to show your research to the committee.

Resources available:

~ Atlas, textbook, reference books in the library. ~ Possible Internet sites.



- <http://www.environment.gov.au/water/information/education/toolkit/search/water-resources-in-australia> - Water resources in Australia
- <http://www.environment.gov.au/topics/water/water-cities-and-towns>
- <https://thewaterproject.org/water-crisis/water-in-crisis-rural-urban-africa> - Water scarcity in Africa
- <http://www.un.org/waterforlifedecade/africa.shtml>
- <http://sitemaker.umich.edu/section9group6/solutions> - Water solutions
- <http://www.melbournewater.com.au/whatwedo/Liveability-and-environment/Pages/Alternative-water-sources.aspx>

Work hard and good luck!

You will give your presentation to the committee in class 6/4.

You will be given 5 days in class to research and put your presentation together.

Anything you do not finish in class must be completed at home.

Water Wise Planning – Assessment

Part 1: Research communities that exist with abundant water resources, compared to those with limited water supply.		
Research a place where settlement has occurred due to abundant water resources in Australia.	/5	/ 15
Compare this to a settlement with limited water in Africa. How does this affect travel, social and living conditions?	/5	
What are some ways of overcoming water scarcity? Research two in detail	/5	
Part 2: Create your own Township		
Document your new township on a map of Australia and persuade the government on why it is the best location.	/5	/ 10
Create a sketch of your town, either by hand or on computer, showing the layout of houses and community facilities.	/5	
Answering of Set Questions		
Where will your community source its water from?	/5	/40
What infrastructure will you need to build to allow for the water supply?	/5	
What is the influence of the nearby environment quality?	/5	
Social connections. How will the members of your community make connections with others?	/ 10	
Community identity: Perception of crime and safety. Cost of living.	/ 10	
How will your new town cope with a water related disaster?	/5	
Presentation		
Correct spelling and structure	/5	/20
Neat presentation & rough copy notes and Bibliography included	/ 10	
Well organised and good use of class time	/5	
TOTAL		/85

Teacher Comment:



click here
to provide
feedback



Thanks for purchasing one of my products!!

Please take a look at my store to view more lesson activities and projects. More will be added weekly.

You can view my products here:



My store has a focus on:

Australian Curriculum Resources

Middle School Projects

Start of the Year Resources

Homework Choice Boards/Grids

STEM/ STEAM by Theme

Credit to the following stores:

