

Student worksheet

7.7 The circulatory system carries substances around the body

Pages 128–129 and 207

The circulatory system

1 What is the function of the circulatory system?

2 How many chambers are there in a human heart?

3 What are the top chambers called?

4 What are the bottom chambers called?

5 Which side pumps blood to the lungs?

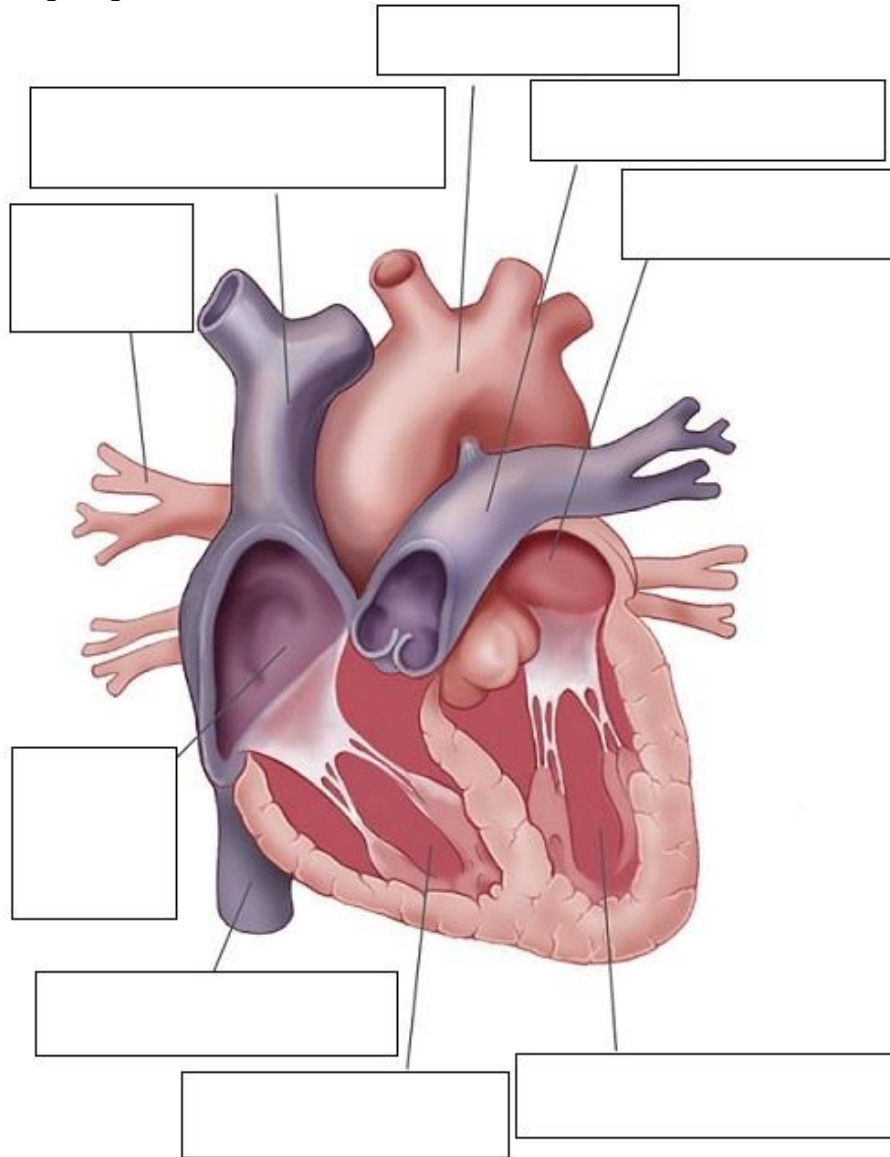
6 Which side pumps blood around the body?

7 Why are the left side and the muscles surrounding it bigger than the right side?

Name: _____

Class: _____

8 Label the following diagram of the heart.



9 Match each component of blood to its function:

BLOOD COMPONENT

- 1 Plasma
- 2 White blood cells
- 3 Haemoglobin
- 4 Platelets
- 5 Red blood cells

FUNCTION

- A Cell fragments that travel in the blood to cuts to block the cuts and stop bleeding
- B Carry oxygen to the body's tissues and carbon dioxide away from them
- C Nutrients and wastes are dissolved in it for transport to and from cells
- D Germ fighters
- E Carries oxygen in red blood cells

- 10 Which type of blood vessel carries blood toward the heart?
-
- 11 Which type of blood vessel carries blood away from the heart?
-
- 12 Describe the structure and function of capillaries.
-
-

Extend your understanding

Animals have various adaptations that allow them to survive the effects of extreme weather conditions. Penguins stand on cold ice, sometimes for months on end, without losing feeling in their feet or getting frostbite. This is because penguins have two main adaptations that involve their circulatory system.



- 13 Research the following adaptations and explain how each occurs in terms of the circulatory system.
- a Penguins control the blood flow to their feet.
-
-
-
-
- b Penguins have countercurrent blood flow systems.
-
-