

Student worksheet

7.2 The digestive system is made up of organs

Pages 118–119 and 204-205

The digestive system

- 1    What is digestion?

\_\_\_\_\_

\_\_\_\_\_
- 2    What are nutrients?

\_\_\_\_\_

\_\_\_\_\_
- 3    How do nutrients travel to where they are needed within the body?

\_\_\_\_\_

\_\_\_\_\_
- 4    What is chemical digestion? Give an example.

\_\_\_\_\_

\_\_\_\_\_

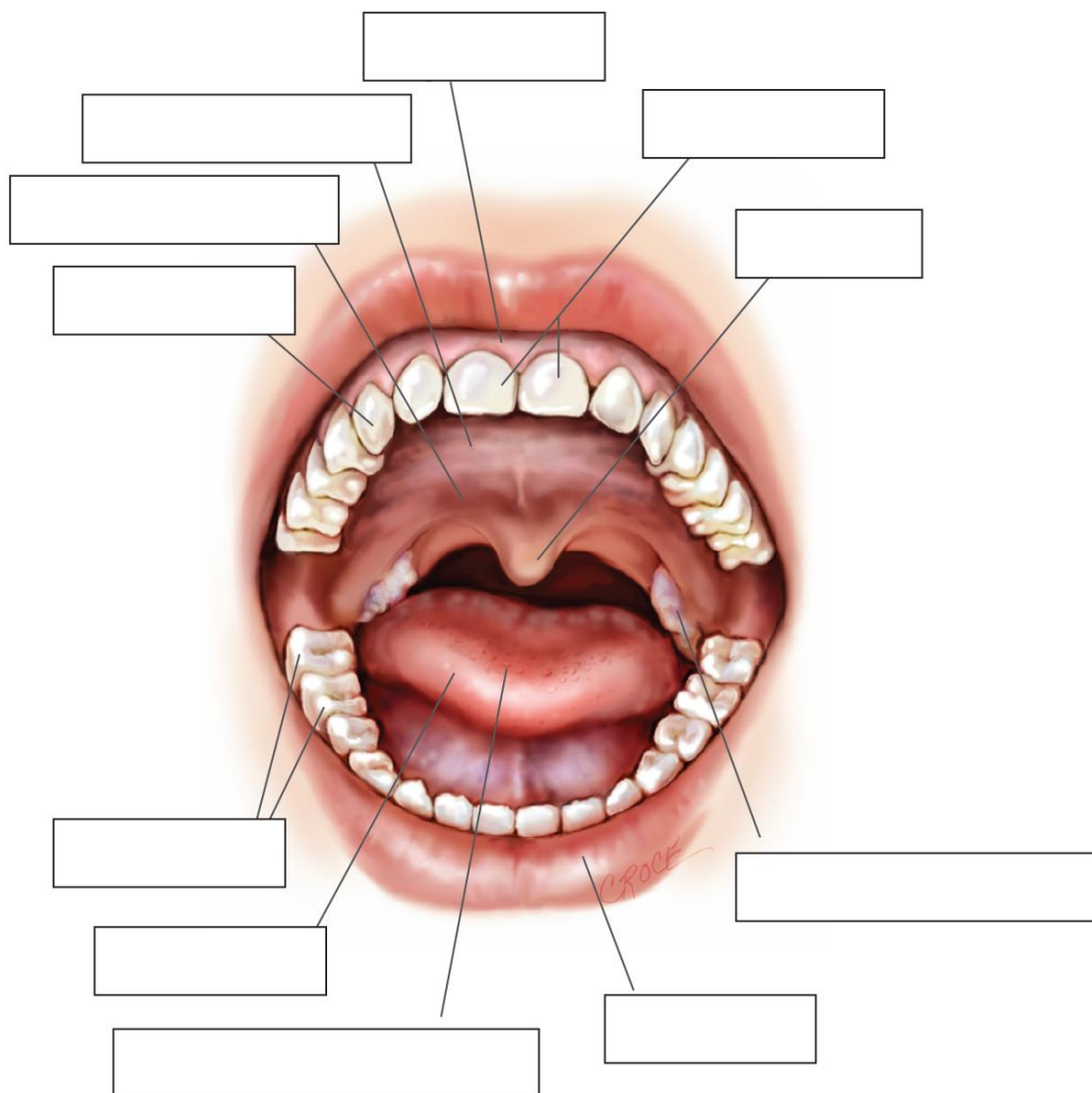
\_\_\_\_\_
- 5    What is mechanical digestion? Give an example.

\_\_\_\_\_

\_\_\_\_\_

\_\_\_\_\_

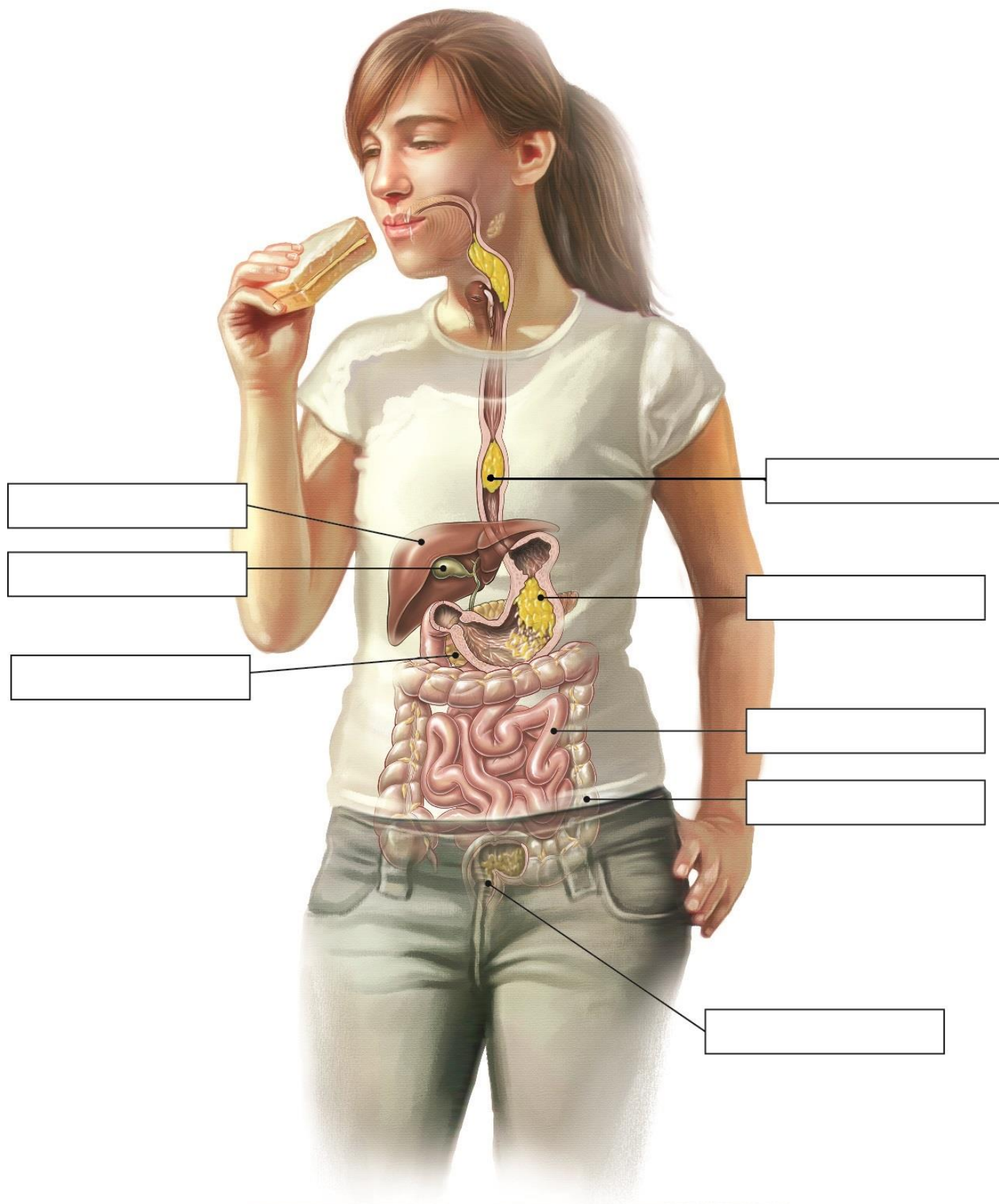
6 Label the following diagram of the mouth.



Name: \_\_\_\_\_

Class: \_\_\_\_\_

7 Label the following diagram of the digestive system.



8 Match the organ with its function.

ORGAN	FUNCTION
1 Stomach	A Makes a type of juice that contains a mixture of digestive enzymes, and also neutralises stomach acid
2 Liver and gall bladder	B Tubular muscle that forces food down to your stomach in a process called peristalsis
3 Mouth	C Absorbs nutrients that feed all cells of the body; villi help to increase the surface area of this organ for better absorption
4 Rectum and anus	D Stores faeces until it starts to become full, then pushes the faeces out of a ring of muscle
5 Large intestine	E Stores food for about three hours while it uses gastric juice to help digest it
6 Oesophagus	F Where water and some vitamin absorption occurs; it is the body's last chance to absorb nutrients
7 Pancreas	G Location of salivary glands that make saliva, which contains enzymes to start chemical digestion
8 Small intestine	H Makes a mixture of chemicals called bile, which is used to digest fat and neutralise (deactivate) stomach acid

### Extend your understanding

9 The human body contains enzymes to aid in the chemical breakdown of foods. What is an enzyme?

\_\_\_\_\_

\_\_\_\_\_

10 Research the following five enzymes: *amylase*, *pepsin*, *protease*, *lactase*, *lipase*  
 From what you have learned, complete the following sentences by matching each enzyme with its function and correct organ in the digestive system:

- a Amylase is able to break down \_\_\_\_\_ into \_\_\_\_\_  
 and is found in the \_\_\_\_\_
- b Pepsin is able to break down \_\_\_\_\_ into \_\_\_\_\_  
 and is found in the \_\_\_\_\_



- c    Protease is able to break down \_\_\_\_\_ into \_\_\_\_\_  
and is found in the \_\_\_\_\_
- d    Lactase is able to break down \_\_\_\_\_ into \_\_\_\_\_  
and is found in the \_\_\_\_\_
- e    Lipase is able to break down \_\_\_\_\_ into \_\_\_\_\_  
and is found in the \_\_\_\_\_

11   What is the function of bile?

---

---

12   Why is bile not considered to be an enzyme?

---

---

---