

Name: _____

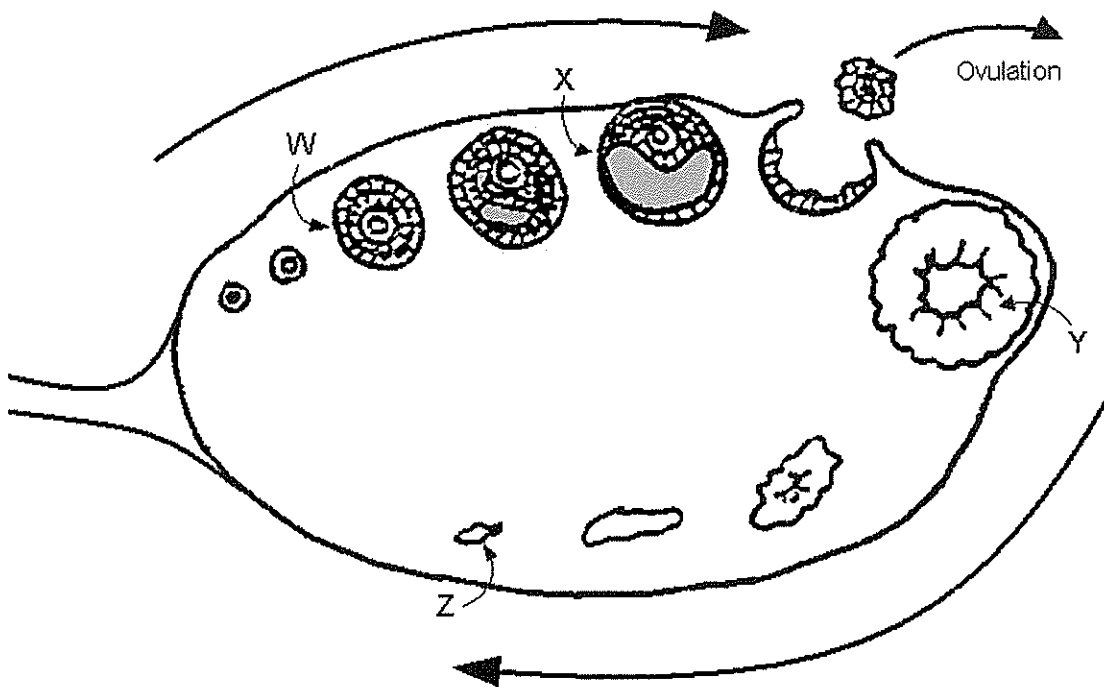
OVARIAN AND MENSTRUAL CYCLE

State the main difference between the ovarian and menstrual cycle?

State how they the ovarian and menstrual cycle are related?

Ovarian Cycle

Label the following where the letters W, X, Y, Z appear

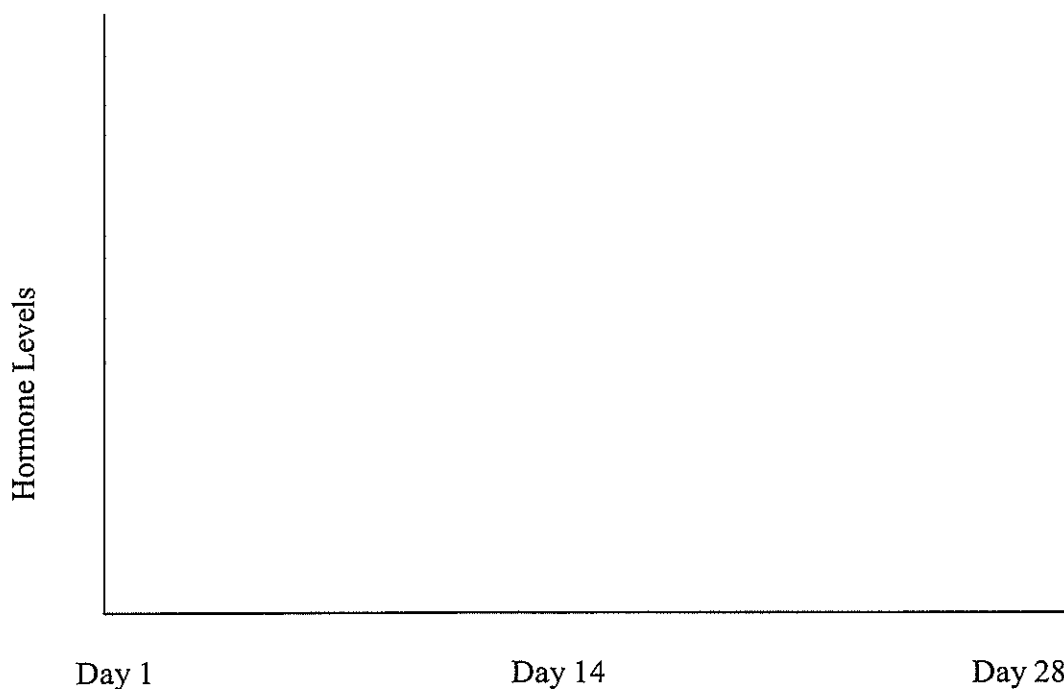


Explain what is happening in the diagram above?

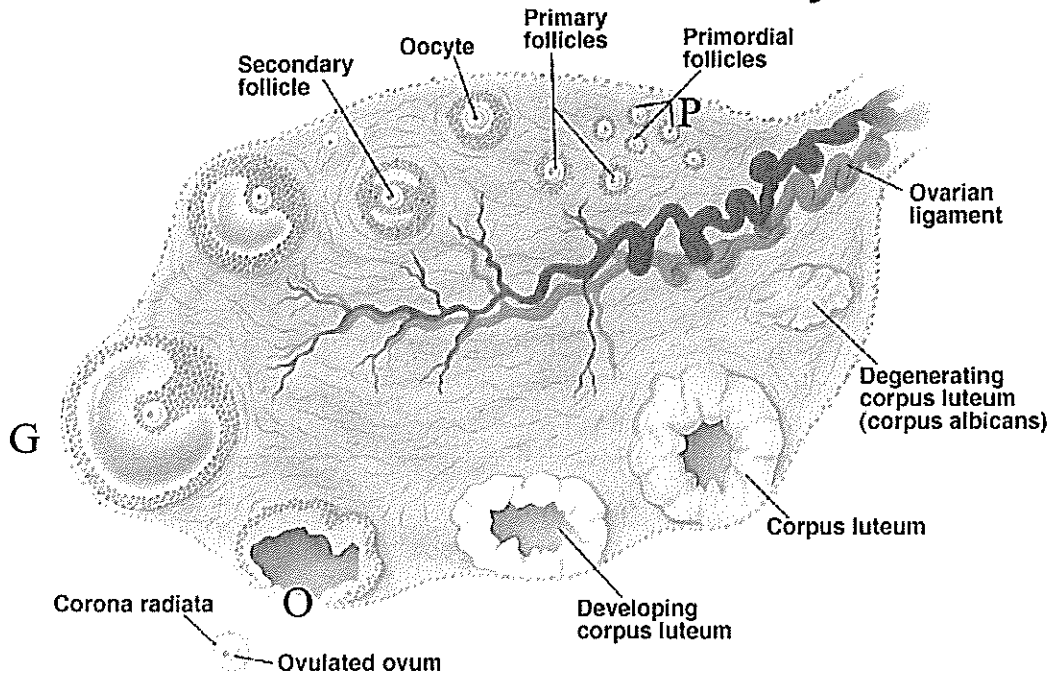
HORMONES THAT REGULATE OVARIAN AND MENSTRUAL CYCLE

Hormone	Where it is produced	Role in the cycles
Progesterone	Ovaries	Maintains the endometrium. Peaks towards the end of the cycle when it endometrium is well supplied and thick
Oestrogen	Ovaries	Maintains the endometrium.
Luteinising Hormone (LH)	Pituitary Gland (Below Front of brain)	Maintain follicle growth. Peaks on Day 14 of the 28 day cycle.
Follicle Stimulating Hormone (FSH)	Pituitary Gland (Below front half of brain)	Maintain follicle growth. Peaks on Day 14 of the 28 day cycle.

Draw in the levels of the hormones showing where they peak (Please do it in pencil to start with)



Structure of an Ovary



1. Name the hormone released from the anterior lobe of the pituitary gland that stimulates the growth of follicles. _____
2. Describe the changes in a follicle from primordial follicle at P to the Graafian follicle at G. _____

3. Name the hormone released by the developing follicle. _____
4. Describe the changes that occur in the uterus as a result of follicular hormone secretion between P and G. _____

5. Name the hormone that triggers ovulation. _____
6. Describe what happens to the follicle after ovulation has occurred at point O. _____

7. Name the hormones released by the corpus luteum. _____

8. How does hormone secretion by the corpus luteum affect the lining of the uterus following ovulation? _____

9. What is the result of regression of the corpus luteum? _____

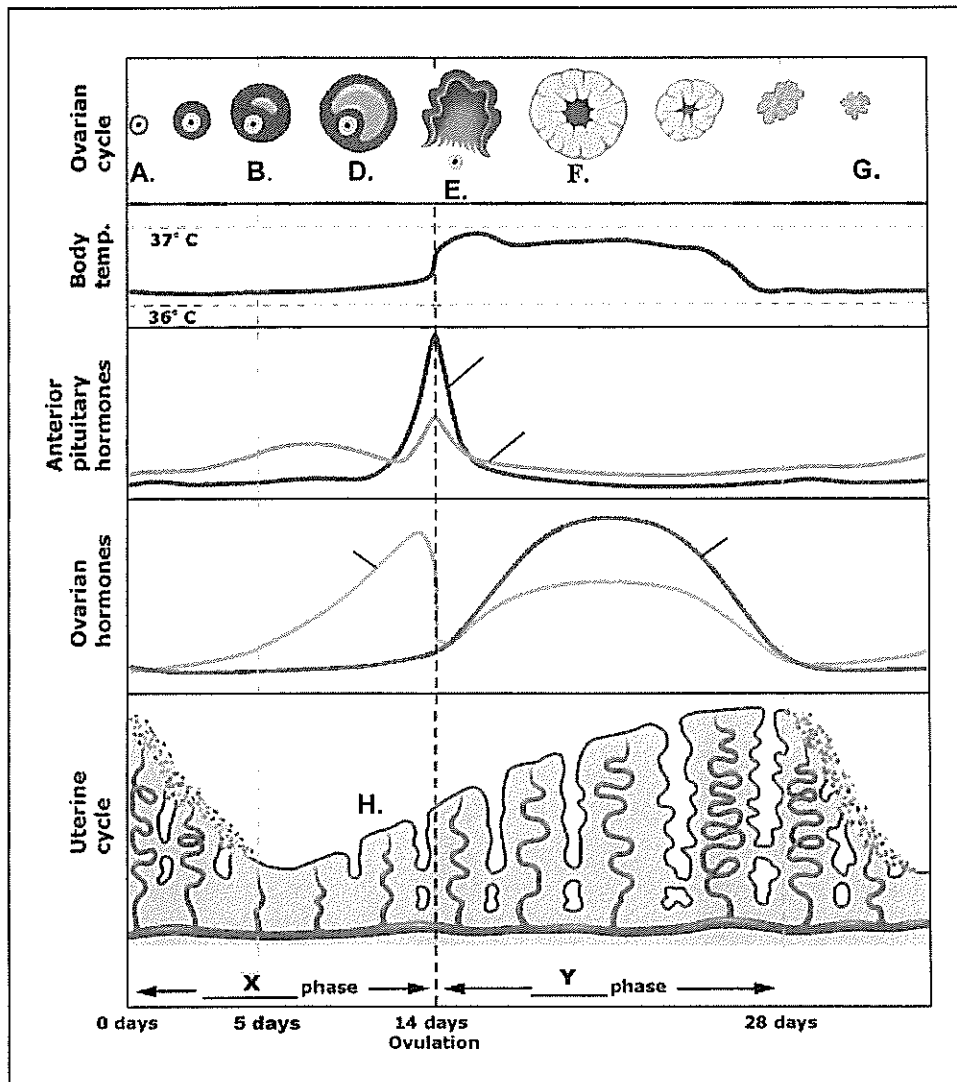
Menstrual Cycle

Show via diagram below changes to the Endometrium over the 28 day period

Day 1 Day 14 Day 28

Explain what is happening in the menstrual cycle using the diagram you have drawn?

THE MENSTRUAL CYCLE



- Name the structures shown at
 A. _____
 B. _____
 C. _____
 D. _____
 F. _____
 G. _____ in the ovary.
- What hormones cause the changes listed above? _____ & _____
- What is the structure shown at H? _____ of the _____
- Describe what happens to structure H between
 Day 1 - 5 of the cycle: _____
 Day 5 - 28 of the cycle: _____
- The name of the event occurring at E? _____
- Identify and label the chart with 'Luteinising Hormone', 'Follicle Stimulating Hormone', 'Oestrogen' and 'Progesterone'.
- Describe how the woman's body temperature changes during a cycle.

- Name the two phases of the cycle indicated at X _____ & Y _____

